

NEFMC Ecosystem Meetings

Defining the stakeholder
universe, scheduling
meetings and setting
objectives

Overview



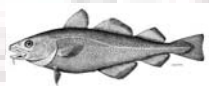
Defining the stakeholder universe



Meetings: Format, number, and location



Meetings: Objectives



Issues for the Ctte

Defining the stakeholder universe



$SU \cong$

$\sum |(NE, MA, SE, HQ)_{i,j}|$
 $+ CVDBS_{i,j}$



Compile sample frame from available data sources



**NEFMC, MAFMC, NOAA HQ,
CVDBS**



Combine into one database



Eliminate duplicates



Clean data



Reformat addresses/zip codes



**Focus on New England states
(CT, RI, MA, VT, NH, ME)**

Examine sample frame data

Total number of observations = 4,780

State	CT	MA	ME	NH	RI	VT
Number	208	2282	1611	263	401	15

Source	SAFMC	MAFMC	NEFMC	NOAA_ HQ	NOAA_ VPS
Number	48	202	1010	289	2919

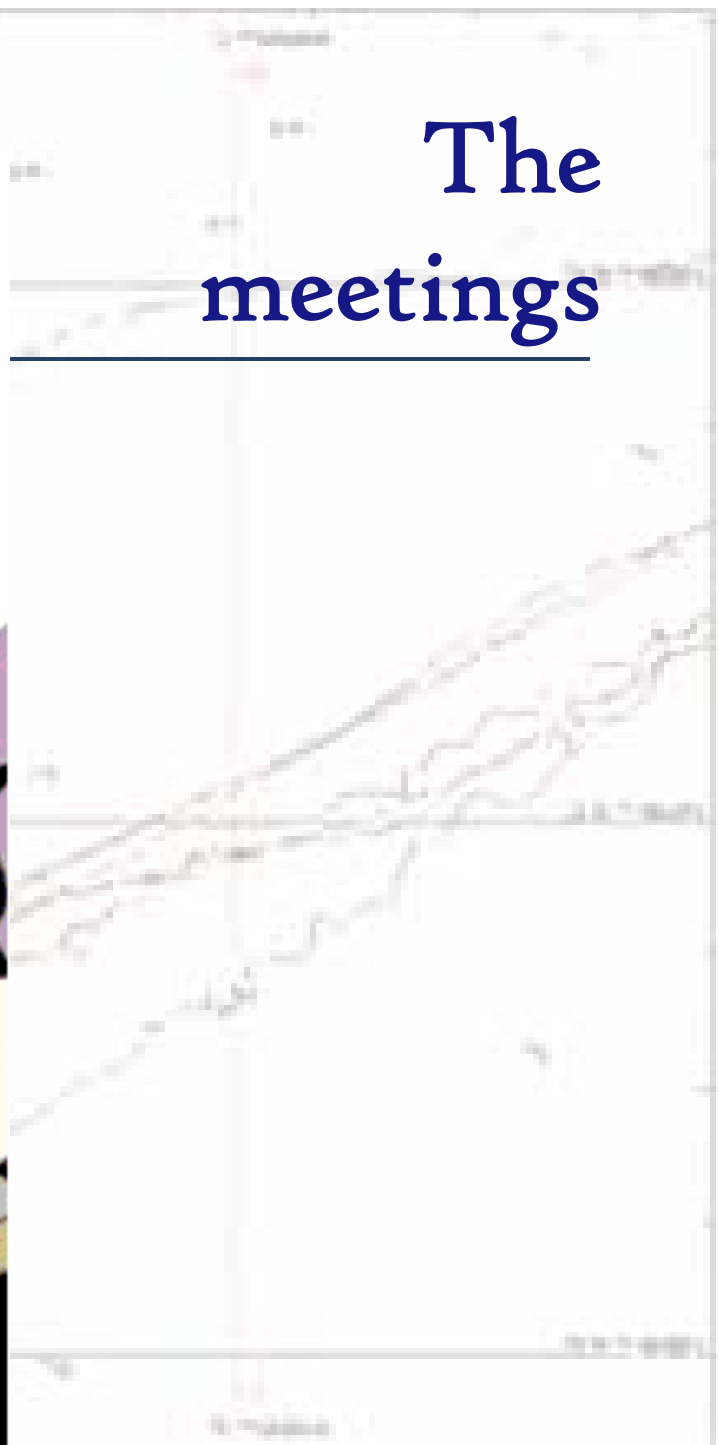
Examine sample frame data

TYPE	Frequency	Percent
Harvester	2917	61.03
NGO	97	2.03
NOAA	95	1.99
Press	20	0.42
Science	20	0.42
Aquaculture	34	0.71
Charter	2	0.04
Commission	30	0.63
Consultant	3	0.06
Department	116	2.43
Exporter	20	0.42
Government	14	0.29
Importer	98	2.05
Seafood	63	1.32
University	69	1.44
not class	1182	24.73

I feel good about this stakeholder meeting, don't you?



The meetings





Meetings: format



**Combination of public workshops
and focus group meetings**



Objectives slightly different:



Provide access for all stakeholders



**Receive targeted feedback from well-
defined groups**

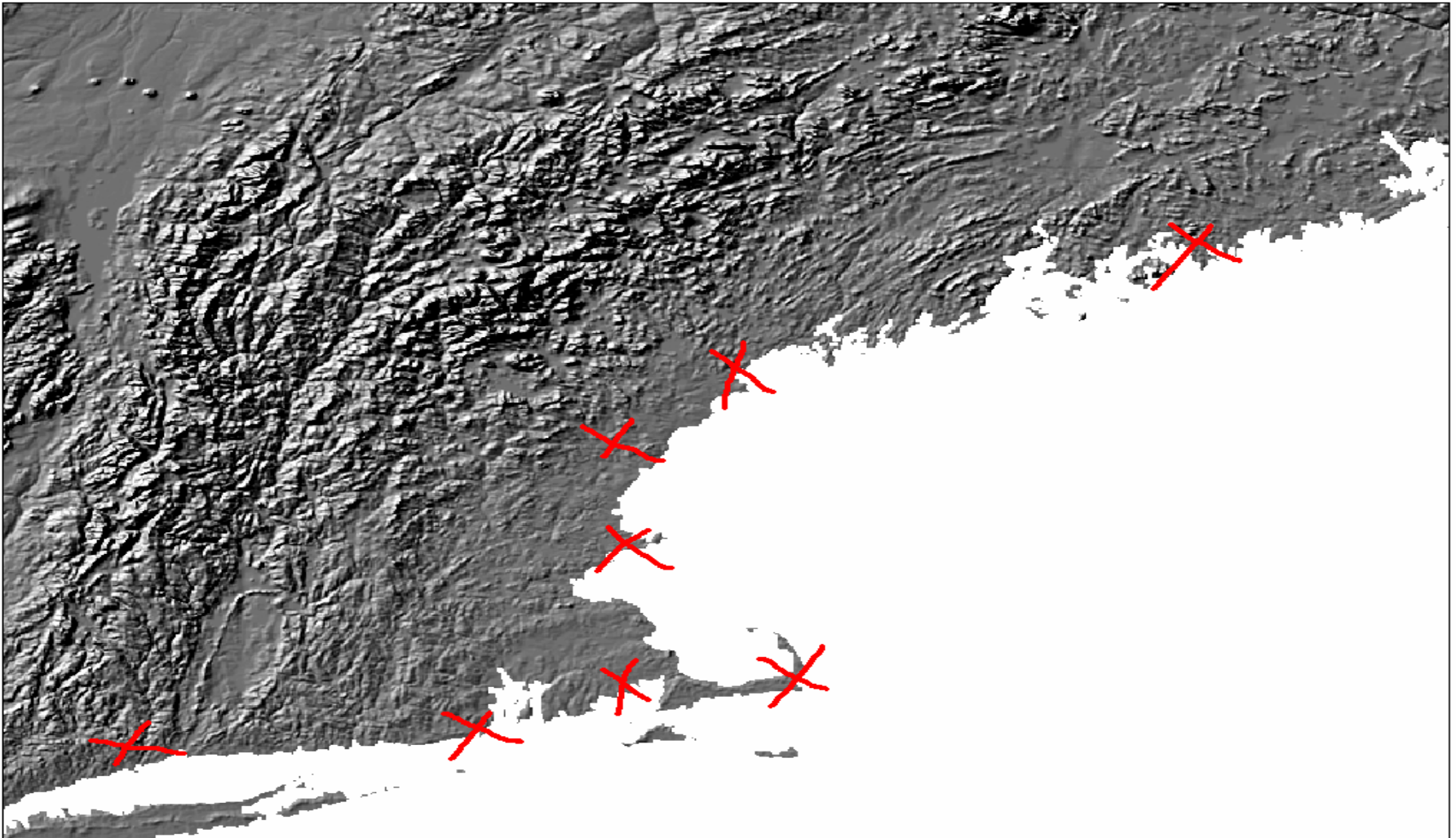


Fisherman's organizations



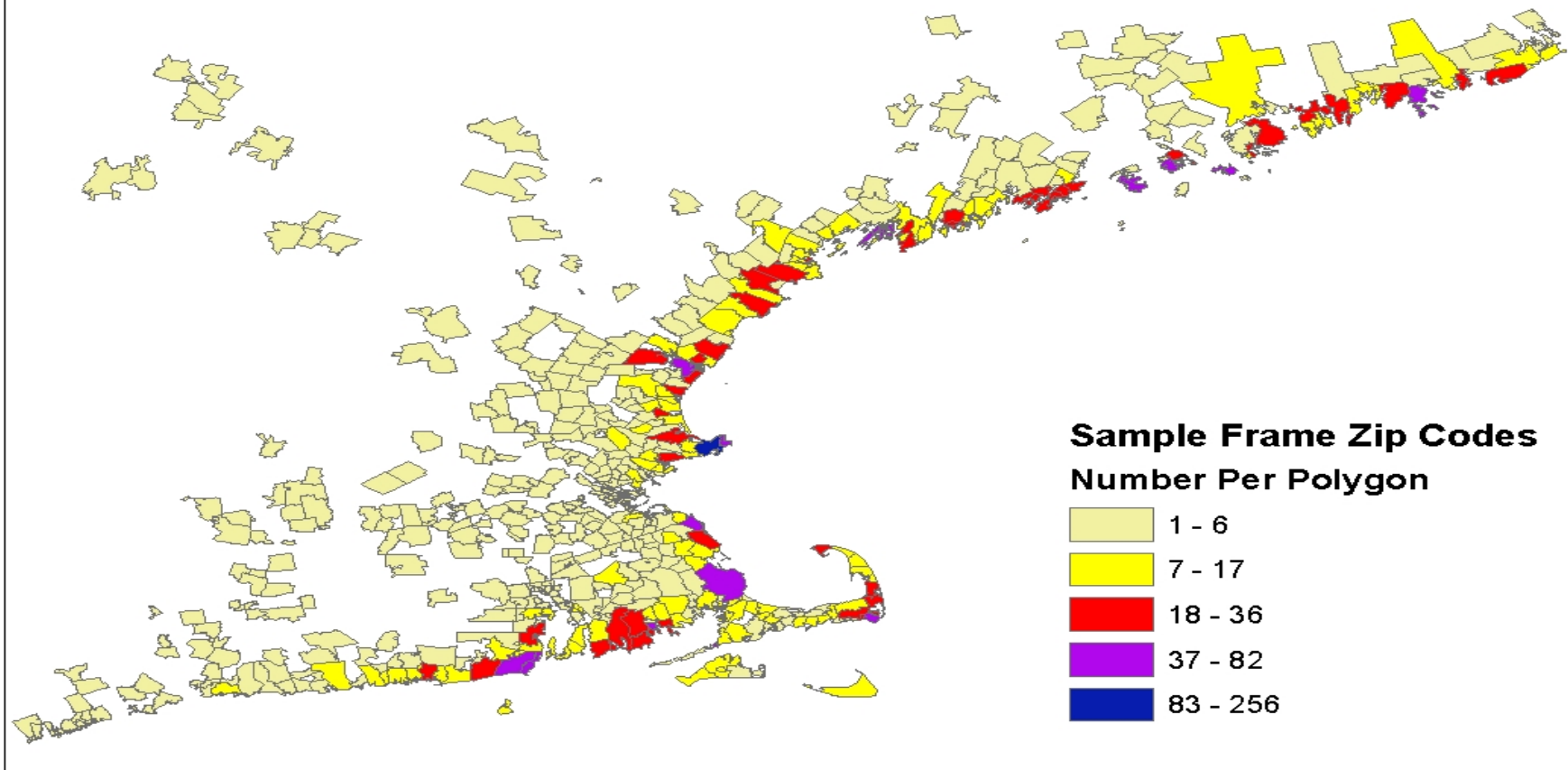
Interested universities

Meetings: Number and location



Determining the optimal number

First, convert sample frame into geo-spatial data...



Determining the optimal number



Objective: schedule meetings such that >85% of sample frame may attend w/ a reasonable drive



30 miles



35 miles



50 miles



Experiment with different numbers of meetings (6, 8, 10) for locations and saturation levels



Preliminary results



Towns selected not necessarily in major fishing ports (e.g. Gilbertville, MA...New Braintree, MA...Sorrento, ME...)



Saturation levels did not always increase w/ more meetings (range was 91% - 99%)



Highlighted the importance of multiple ME meetings



Sample results

6 Meetings, 50 miles

Pembroke, MA
Northwood, NH
Pemaquid, ME
Cherryfield, ME
Woodstock, CT
Northfield, CT

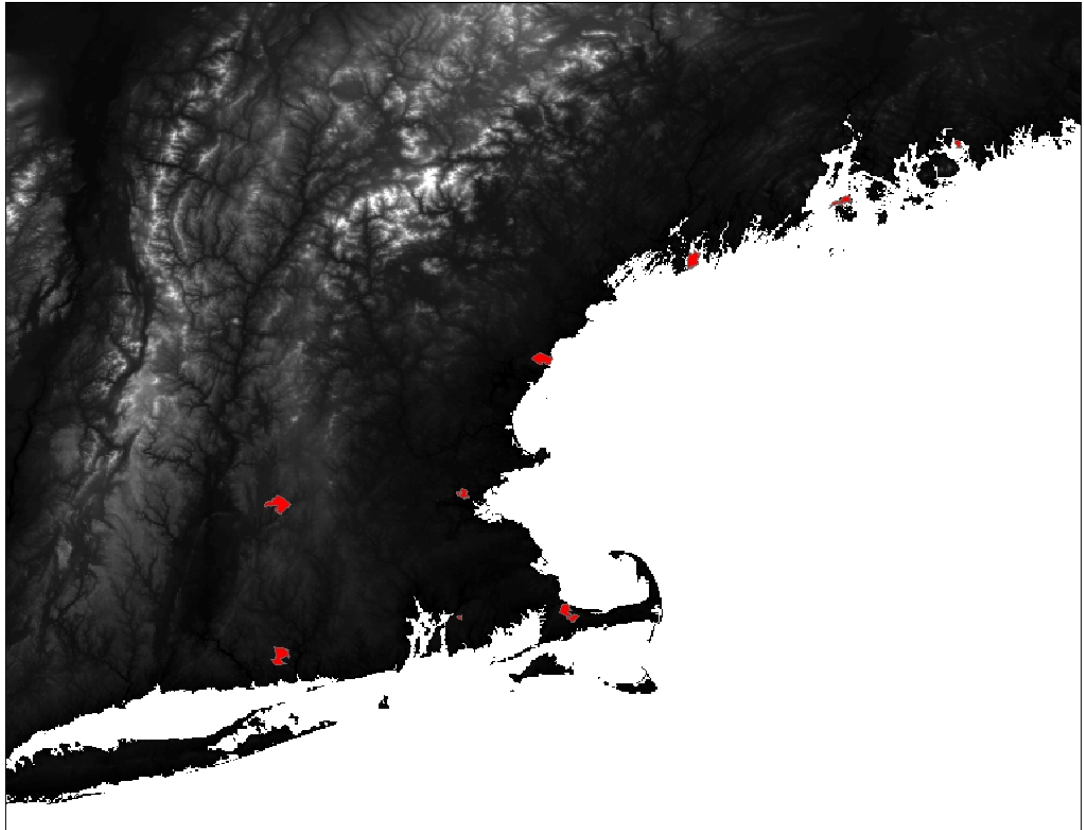
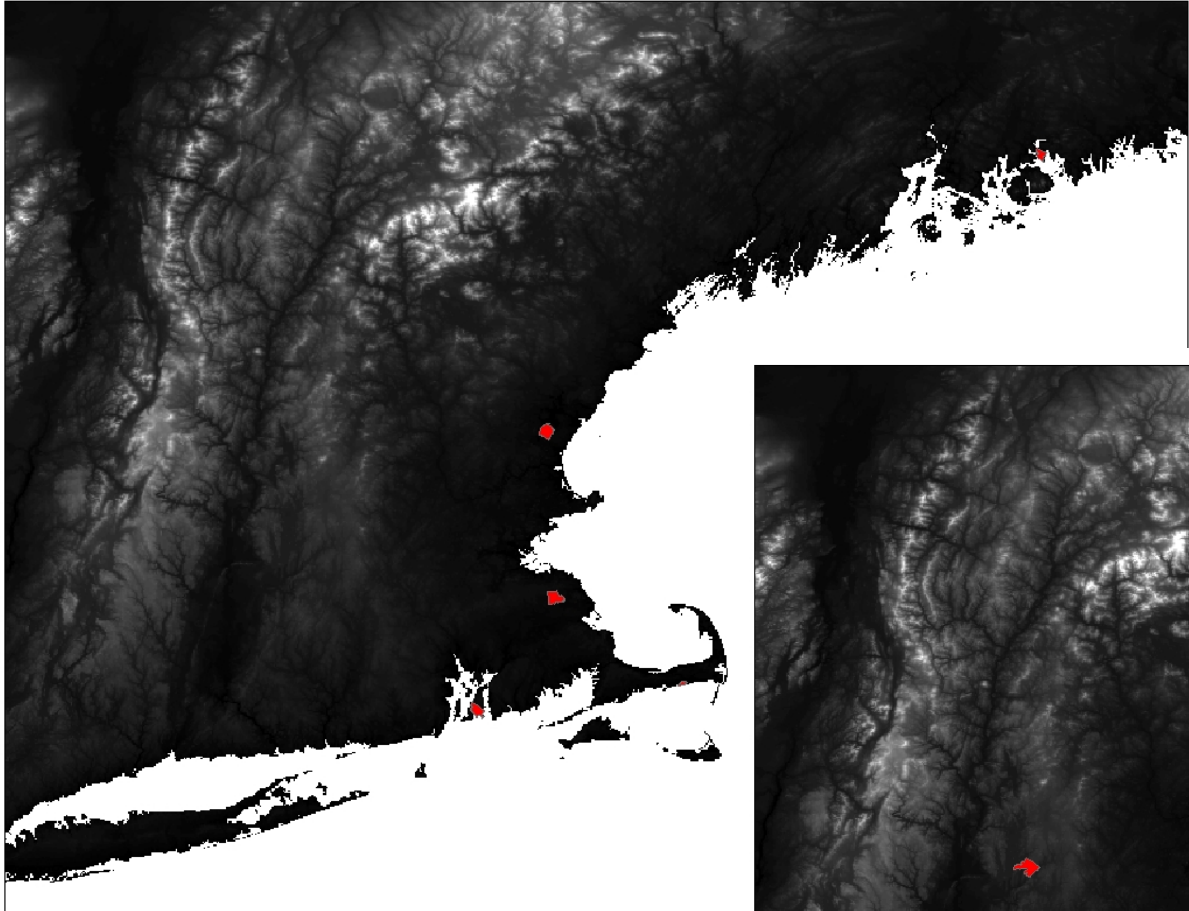
Saturation = 99.56%

10 Meetings, 30 miles

Gilbertville, MA
Medford, MA
Sandwich, MA
Fall River, MA
Cape Neddick, ME
Georgetown, ME
Pembroke, ME
Sorrento, ME
North Haven, ME
Oakdale, CT

Saturation = 97.24%

Sample results



Suggested meeting locations



New London, CT



Greenwich, RI



Fall River, MA



Hyannis, MA



Braintree, MA



Peabody, MA



Portsmouth, NH



Portland, ME

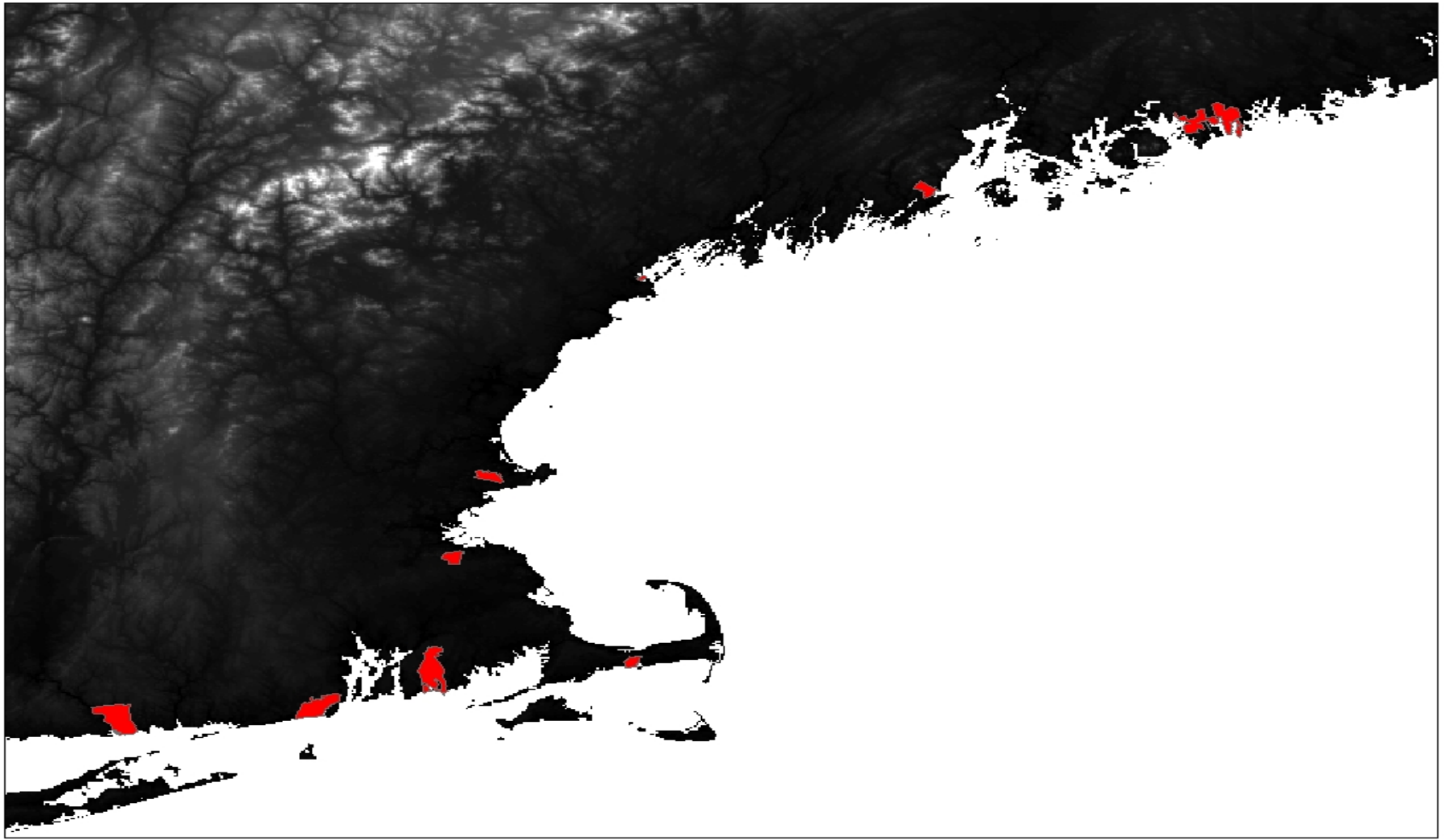


Camden, ME



Gouldsboro, ME

Suggested meeting locations



Meeting locations: notes



**Additional meetings joint w/
MAFMC**

Montauk, Cape May, etc.



**Meeting locations achieve > 90%
saturation of sample frame**



**SOW called for approx. 15
meetings**

Achieved through joint meetings and focus
groups

Meetings timeframe



Gouldsboro, ME

Sept 26 (week of)



Camden, ME



Portland, ME



Portsmouth, NH

Oct 3 (week of)



Peabody, MA



Braintree, MA



Hyannis, MA

Oct 24 (week of)



Fall River, MA



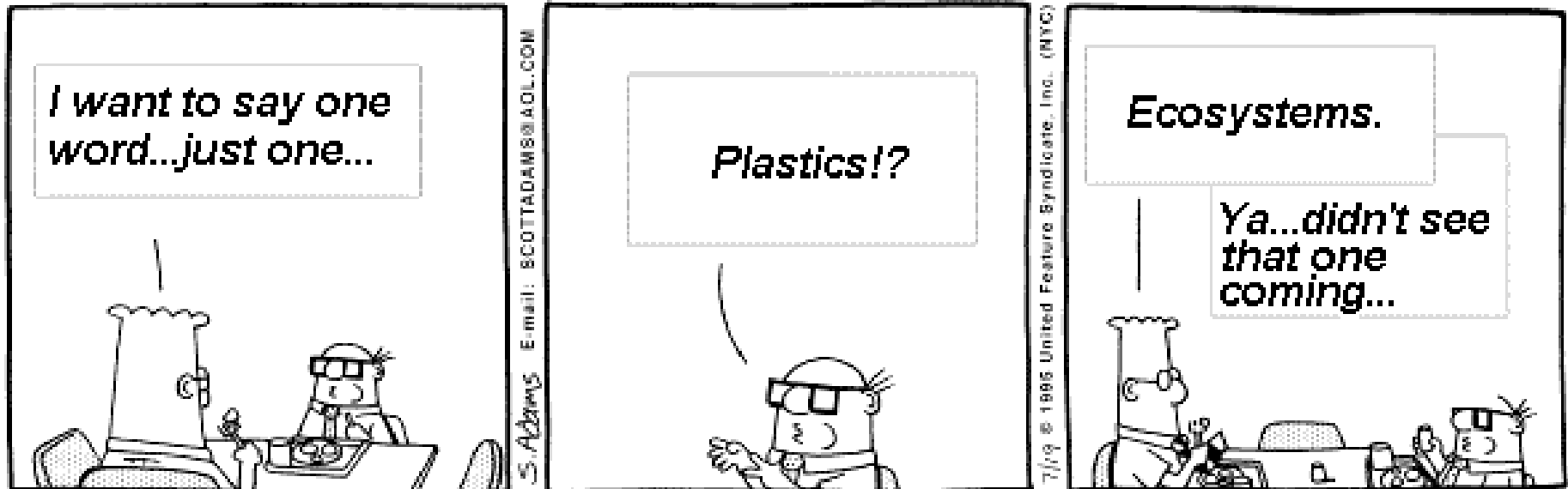
Greenwich, RI

Nov 7 (week of)



New London, CT

Objectives of ecosystem stakeholder meetings



DILBERT © United Feature Syndicate, Inc.
Redistribution in whole or in part prohibited.

SOW's nine issues

SOW calls for receiving input on nine separate issues:

1. Views regarding the adequacy of current approaches for addressing ecosystem considerations
2. The nature of ecosystem-based management and the goals to be achieved in addressing ecosystem issues

SOW's nine issues

3. The nature of the public decision making processes within the FMCs for addressing management tradeoffs, consistent with identified goals
4. Mechanisms for considering activities outside the FMC's purview but influencing ecosystem productivity, (the boundaries of sub-regional ecosystems within the areas of the various FMCs)

SOW's nine issues





6. The types of management measures that would be incorporated into ecosystem approaches for fishery management, consistent with the identified goals
7. The specific issues to be addressed in a fishery ecosystem plan (FEP)
8. Techniques for determining success of ecosystem-based management
9. Other issues considered important in any particular region.

SOW's nine issues

This is obviously some sort of joke.

Recommended objectives

A four-pronged attack:

-  Local ecosystem boundaries
-  Ecosystem indicators
-  Capacity for local governance
-  Adequacy of current methods

Meeting objectives: some thoughts



By limiting scope of input solicited, we will



Avoid undue confusion



Obtain data we can use



Contribute productively to contemporary initiatives/debates



By focusing on local issues, we will:



Maintain interest



Receive specific, targeted feedback

Issues for the Committee



From your experience, are meeting locations likely to engender highest possible turnout? Any recommended changes?



Could timeframes be juggled to better meet needs of local stakeholders?



Do you agree w/ simplified approach?



Thank you for your time.

I know it's been a long day.

Please tell all of your friends to come and share
their thoughts at our meetings.