

Essential Fish Habitat Omnibus Amendment

- Progress Since Approval of Goals and Objectives
- How Do the Pieces Fit Together?

What do we need to do?

- (1) - Description and identification of essential fish habitat (EFH)
- (2)A - Evaluate fishing activities that may adversely affect EFH
- (2)B - Minimize fishing activities that may adversely affect EFH
- (3) - Identify non-MSA fishing activities that may adversely affect EFH
- (4) - Identify non-fishing activities that may adversely affect EFH

What do we need to do?

- (5) - Analyze how cumulative impacts of fishing and non-fishing activities affect EFH
- (6) - Identify actions to encourage conservation and enhancement of EFH
- (7) - List the major prey species for the species in the FMU and discuss location
- (8) - Identify habitat areas of particular concern (HAPC)
- (9) - Recommend research efforts, preferably in priority order

What are we doing?

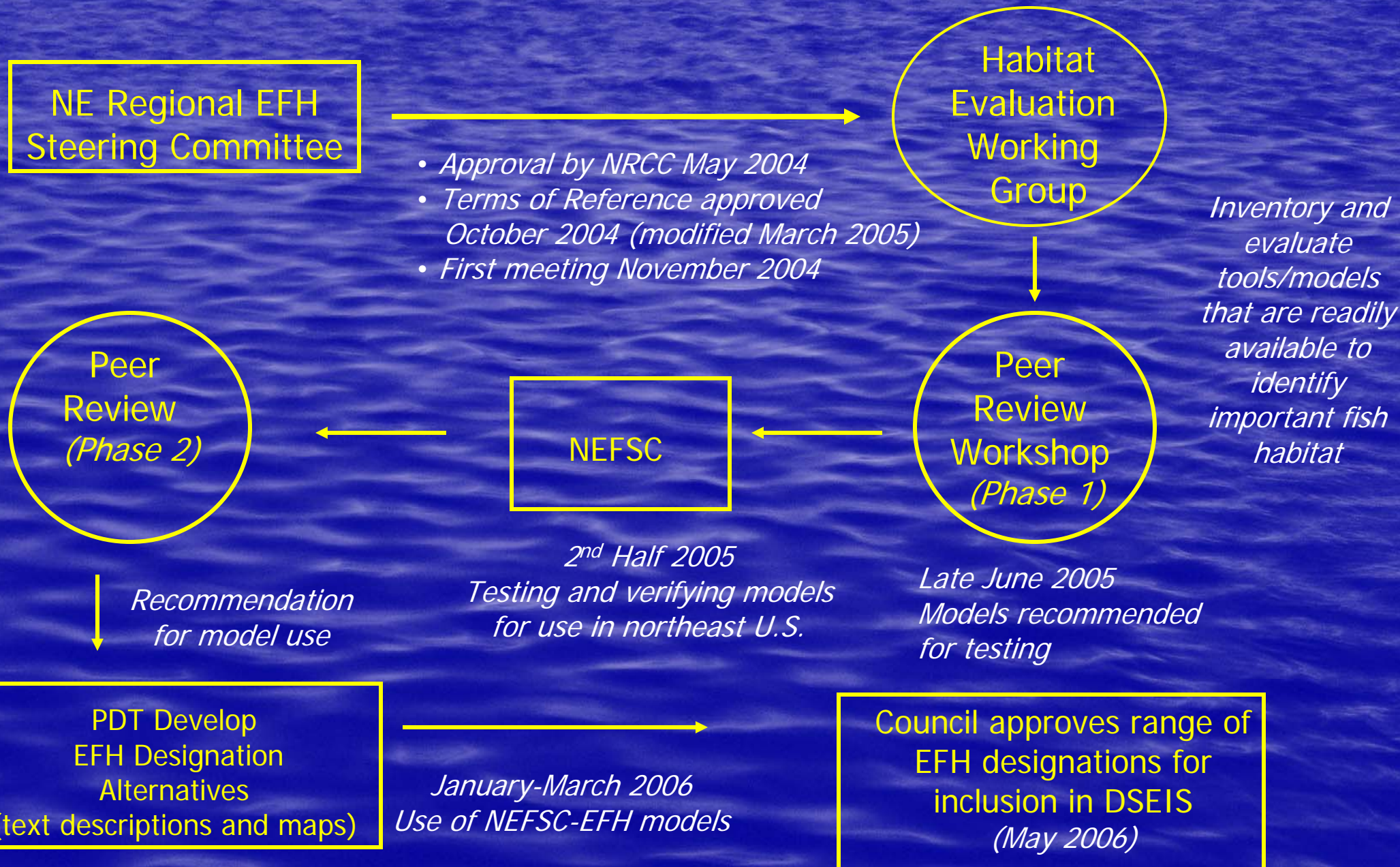


Progress . . .

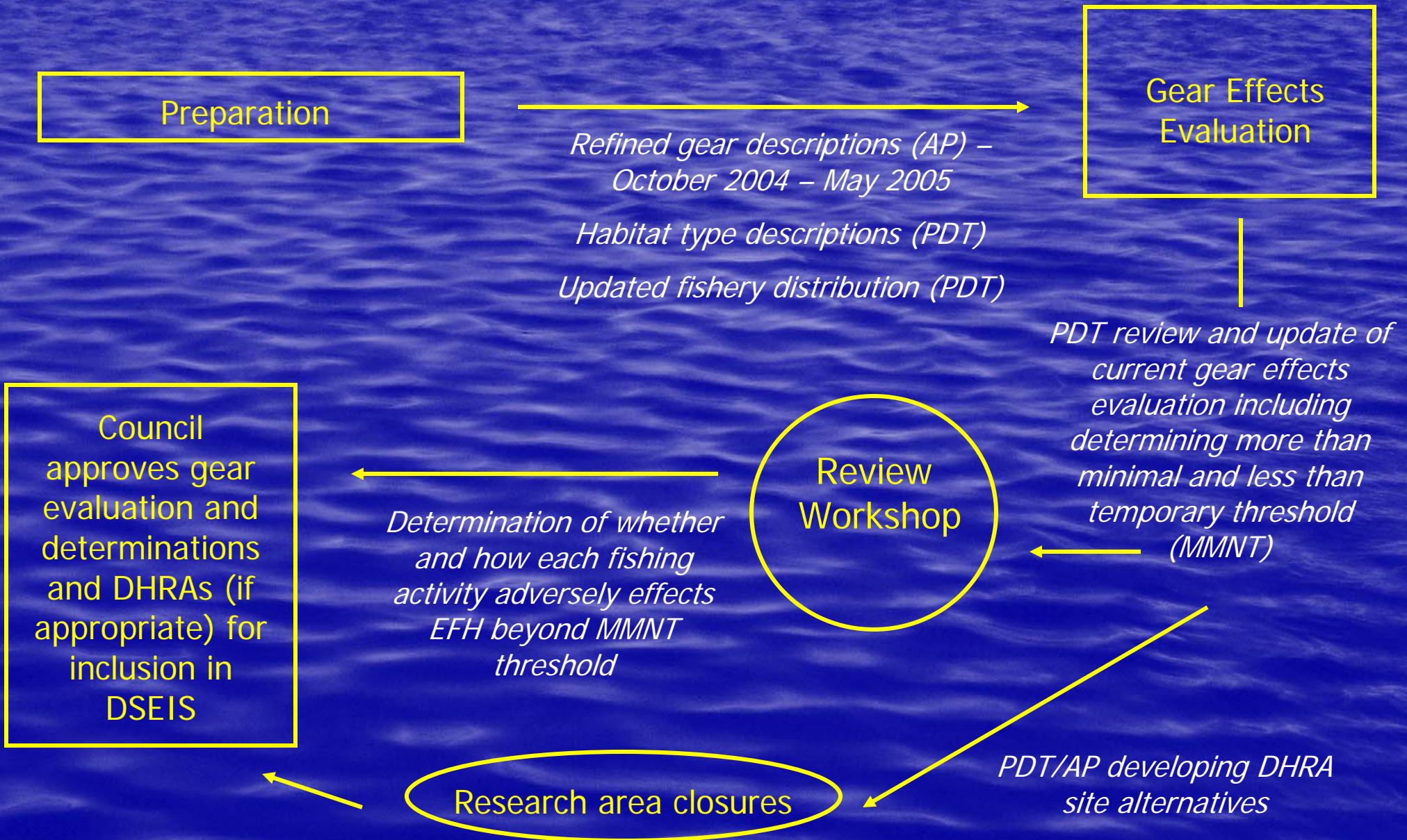
Putting the pieces together . . .



(1) Description and Identification of Essential Fish Habitat

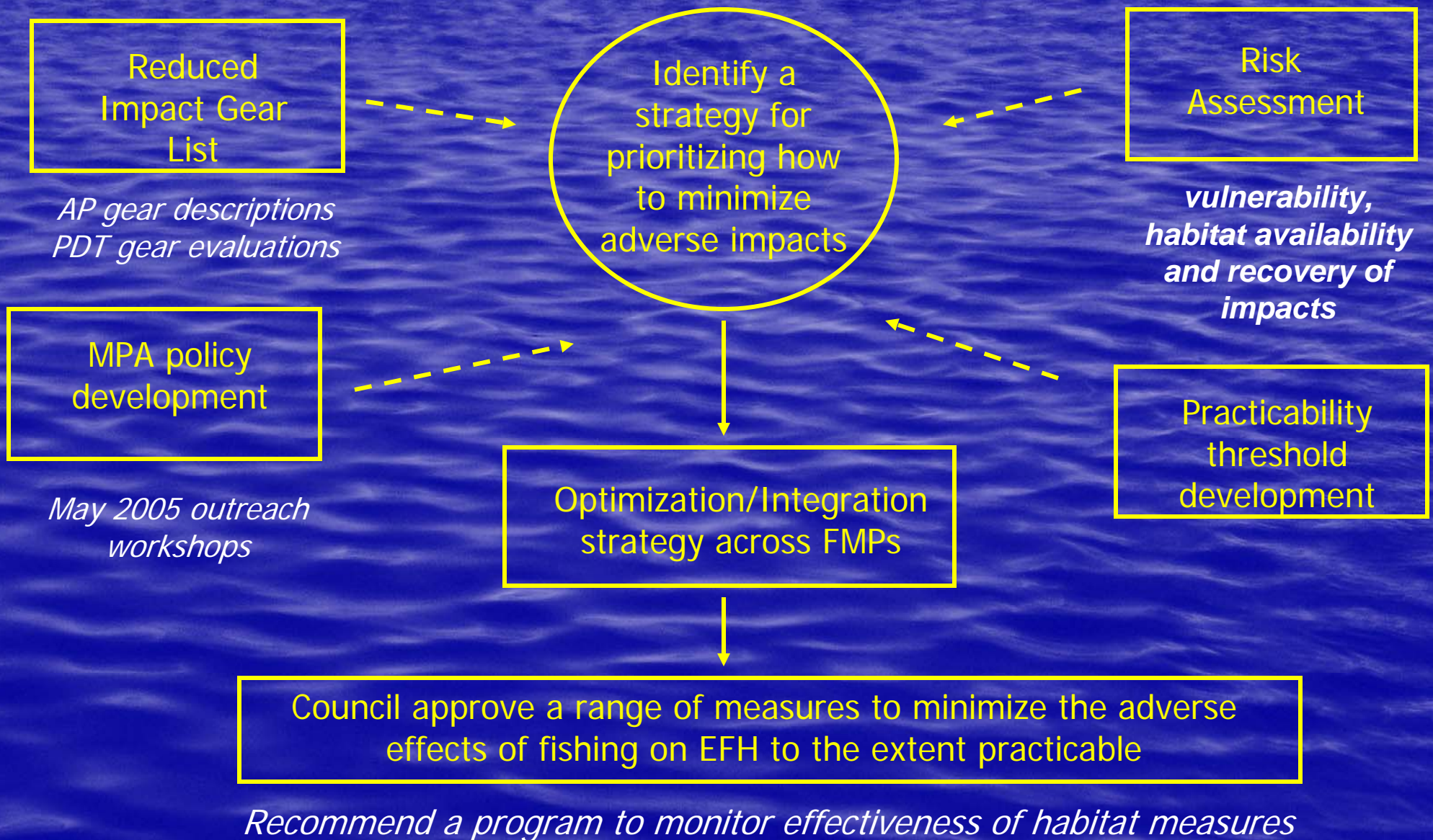


(2) Fishing activities that may adversely affect EFH (i) Evaluation



(2) Fishing activities that may adversely affect EFH (ii) Minimizing adverse impacts

"Act to prevent, mitigate or minimize...to the extent practicable."



(3) Non-Magnuson-Stevens Act fishing activities that may adversely affect EFH

- PDT/AP to review analysis conducted and approved in recent NEFMC Amendments

(4) Non-fishing related activities that may adversely affect EFH

Northeast
Regional Non-
Fishing Impacts
Workshop

January 2005

NERO HCD
analyzing data
and reviewing
input from
participants

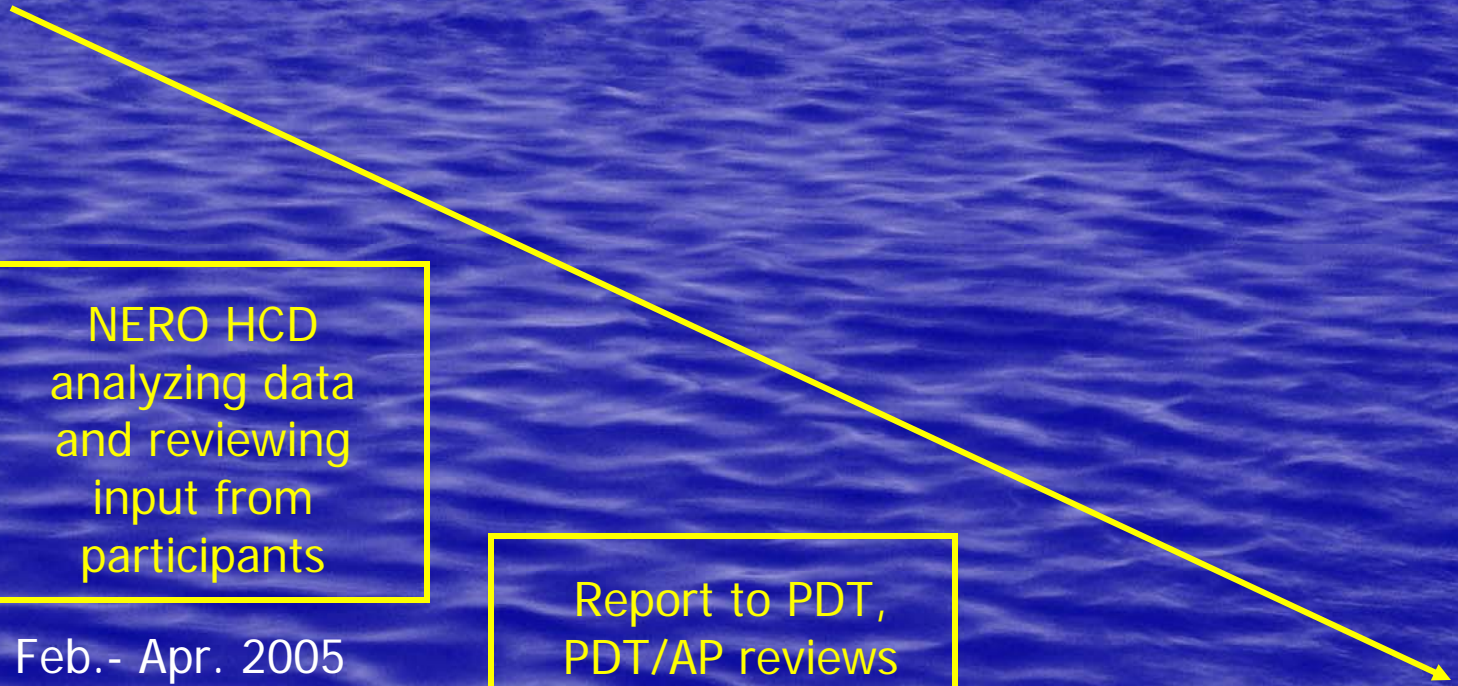
Feb.- Apr. 2005

Report to PDT,
PDT/AP reviews
document,
prepares appr.
MSA/NEPA
documentation

October 2005

Council approves
for inclusion in
DSEIS

January 2006



(5) Cumulative impacts analysis



Hhhmmm...

(6) Conservation and Enhancement

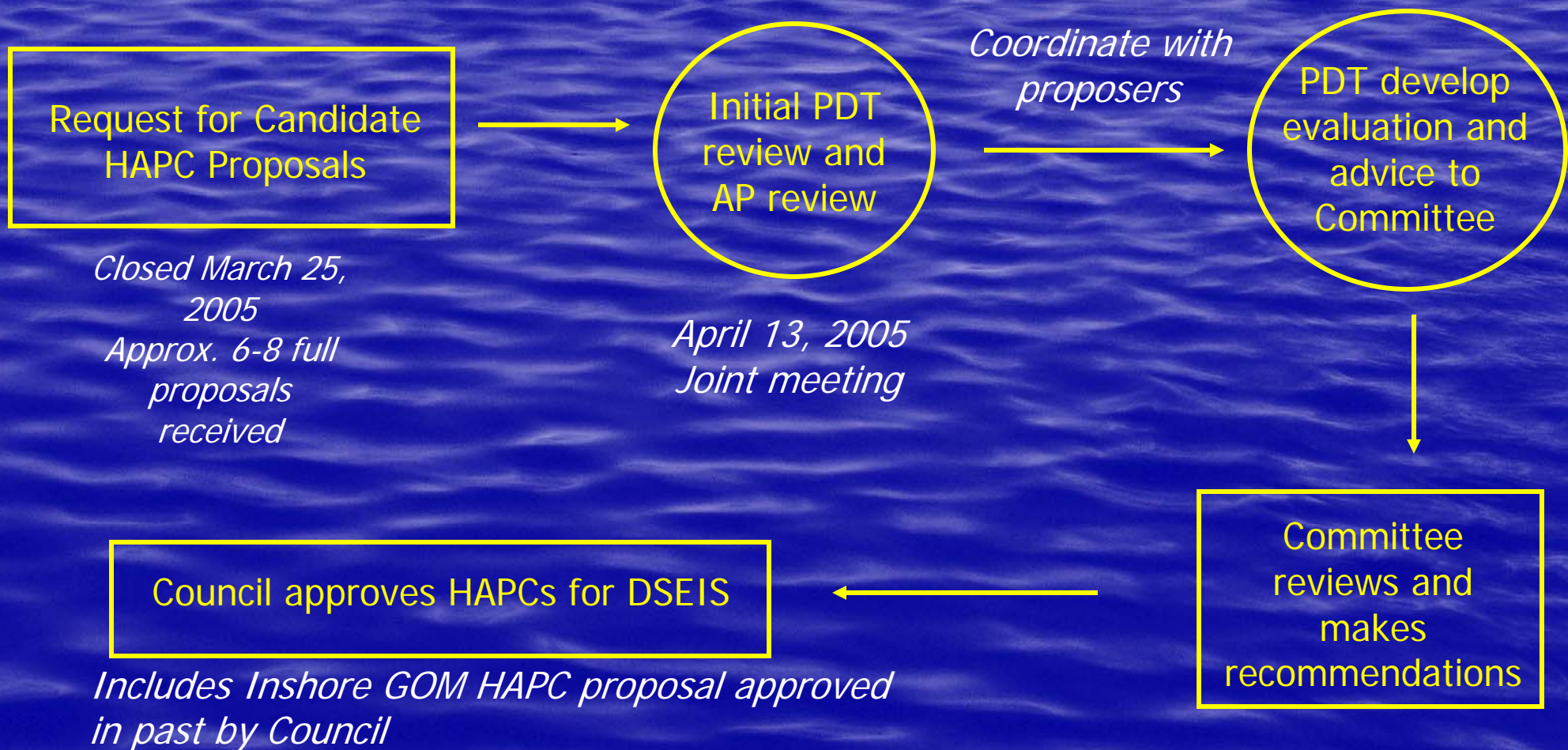
- Recommendations included in Non-Fishing Impacts section form foundation for this requirement

(7) Prey Species

- Summer 2005 – Working with NEFSC through PDT to evaluate diet composition database
- Fall 2005 – PDT to evaluate revised NEFSC EFH Source Documents
- Spring 2005 – Prepare documentation

(8) Identification of habitat areas of particular concern

- *Important current or historic ecological function*
- *Sensitivity to human-induced stresses*
- *Extent of current or future development stresses*
- *Rarity of the habitat type*



(9) Research and information needs

- PDT/AP to review:
 - analysis conducted and approved in recent NEFMC Amendments
 - species specific habitat-related research recommendations in EFH Source Documents
 - other relevant sources of research recommendations (e.g. NRC, FAO, etc.)
- Document habitat-related research conducted since Omnibus Amendment 1 in 1998
- Prepare a prioritized list of research and information needs
 - Review by Research Steering Committee and Habitat Committee

Whew!



Essential Fish Habitat Omnibus Amendment

- Progress Since Approval of Goals and Objectives (July 2004)
- How Do the Pieces Fit Together?