

## **Appendix III**

**Final Reports for Sea Scallop Controlled Access Programs  
During the 1999 and 2000 Fishing Years**



Final report for controlled access sea scallop trips in Closed Area II during June 15, 1999 to November 2, 1999 (Source: NMFS at <http://www.nero.noaa.gov/ro/fso/gb.htm>).

Table 1. Scallop landings and yellowtail flounder bycatch on controlled access trips in Closed Area II during the 1999 fishing year; and summary of participation

	<b>Directed Scallop Fishery</b> (meat weight)	<b>Yellowtail Flounder</b> <b>Bycatch</b> (live weight)
<b>Total Allowable Catch (TAC)</b>	<b>9,384,812 lbs</b>	<b>853,165 lbs</b>
	<b>(4,257 mt)*</b>	<b>(387 mt)*</b>
<b>Total Catch to date</b>	<b>5,996,110</b>	<b>912,475</b>
<b>% of TAC</b>	<b>64%</b>	<b>107%</b>
	<b>Trips</b>	<b>Number of Vessels</b>
<b>Number of Trips<sup>1</sup></b>	1	24
	2	23
	3	51
	4	58
	5	30
	6	7
<b>Total Number of Participating Vessels</b>		187
<b>Number of Scallop Fishing Trips<sup>1</sup></b>		644

\* 2,204.56 lbs equal 1 metric ton (mt)

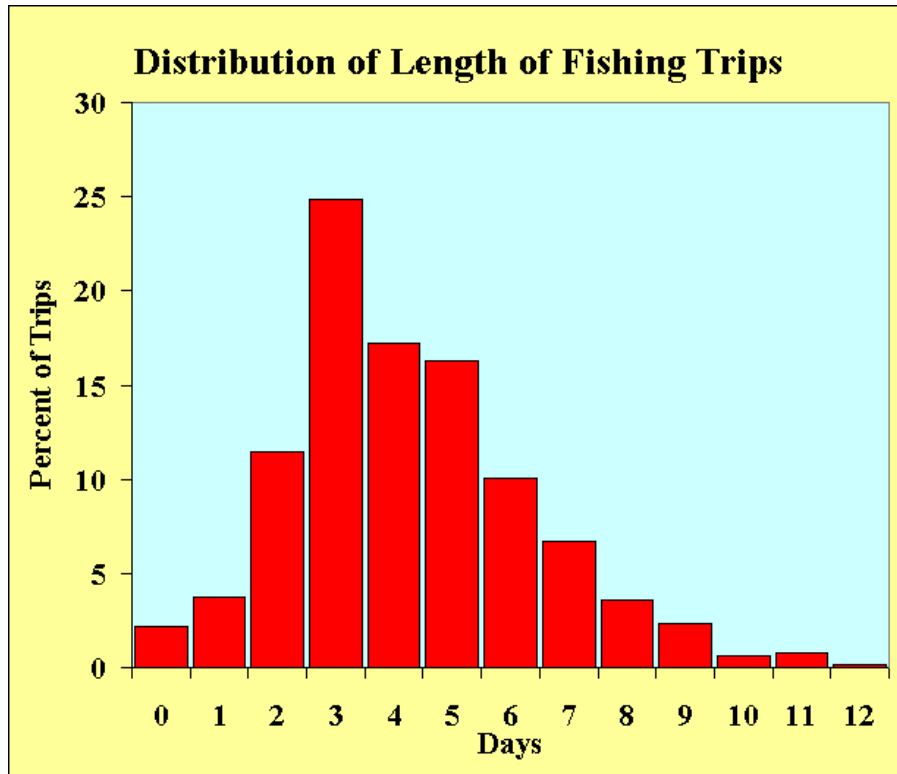


Figure 1. Percent of trips in Closed Area II during 1999, categorized by trip duration.

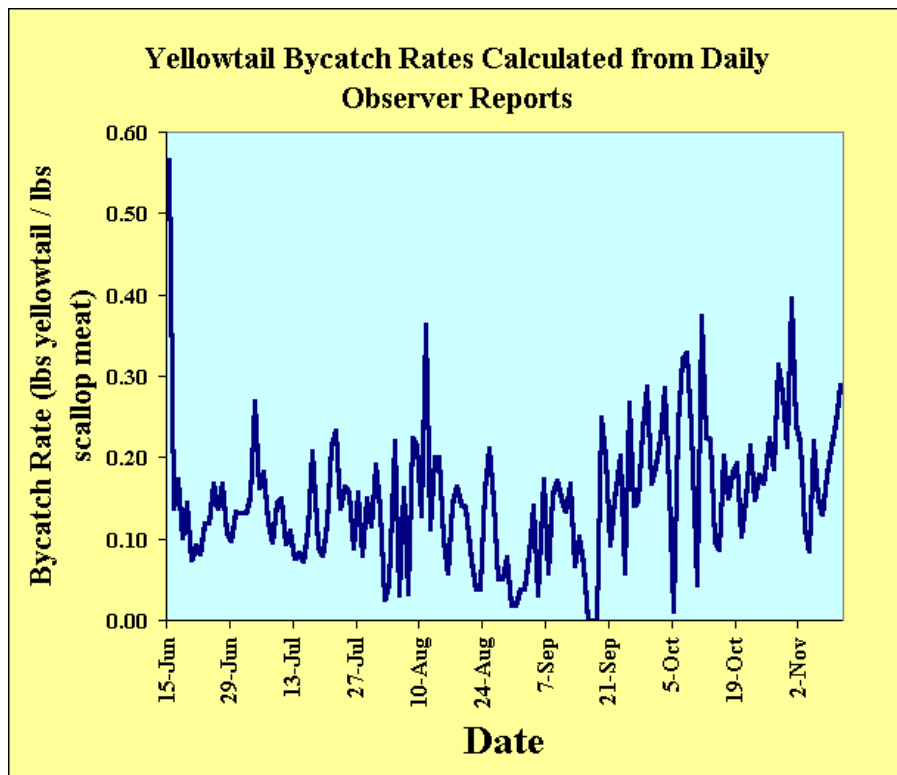


Figure 2. Trends in yellowtail flounder bycatch rates for the 1999 Closed Area II fishery, from daily observer reports.

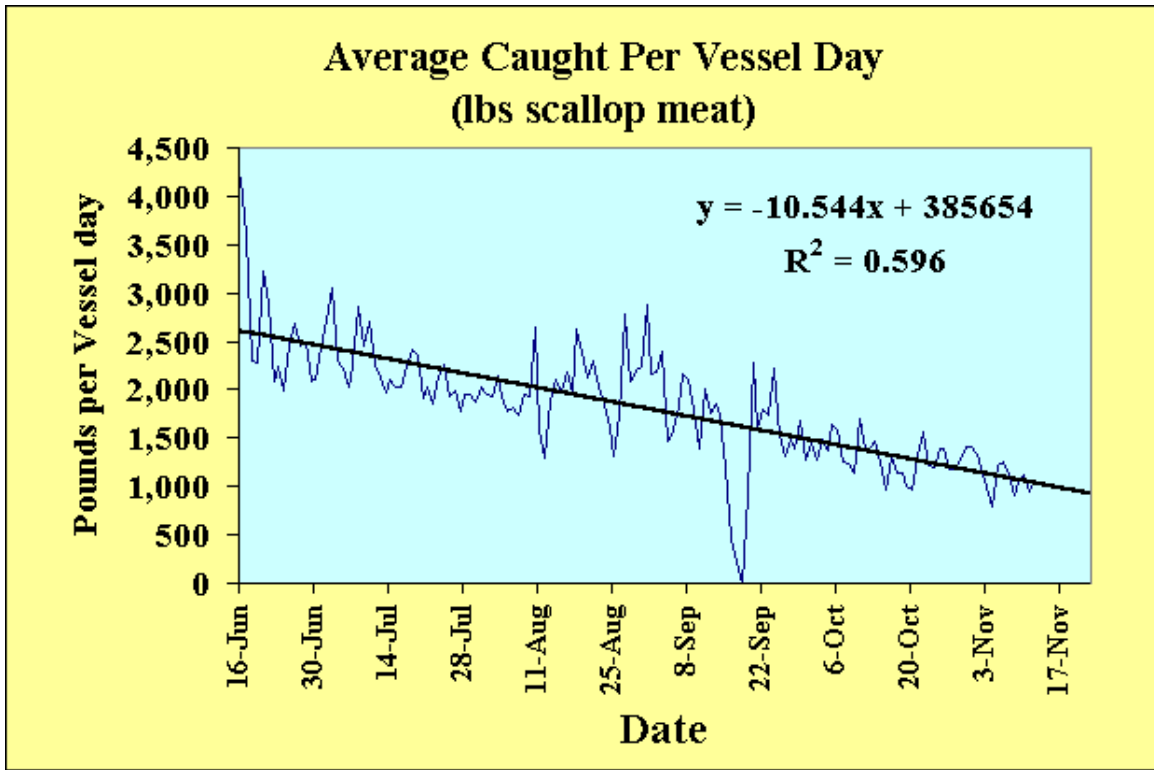


Figure 3. Trend in scallop catch per DAS during the 1999 Closed Area II scallop fishery.

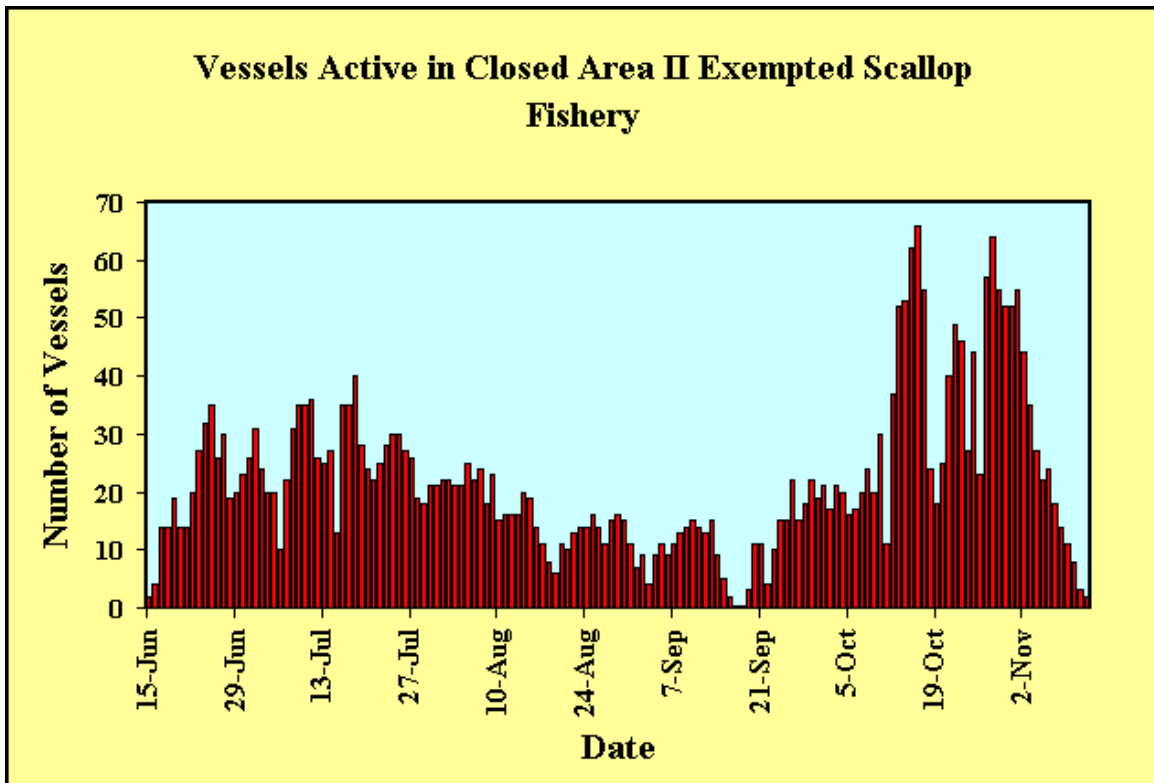


Figure 4. Trend in fishing activity during the 1999 Closed Area II fishery.

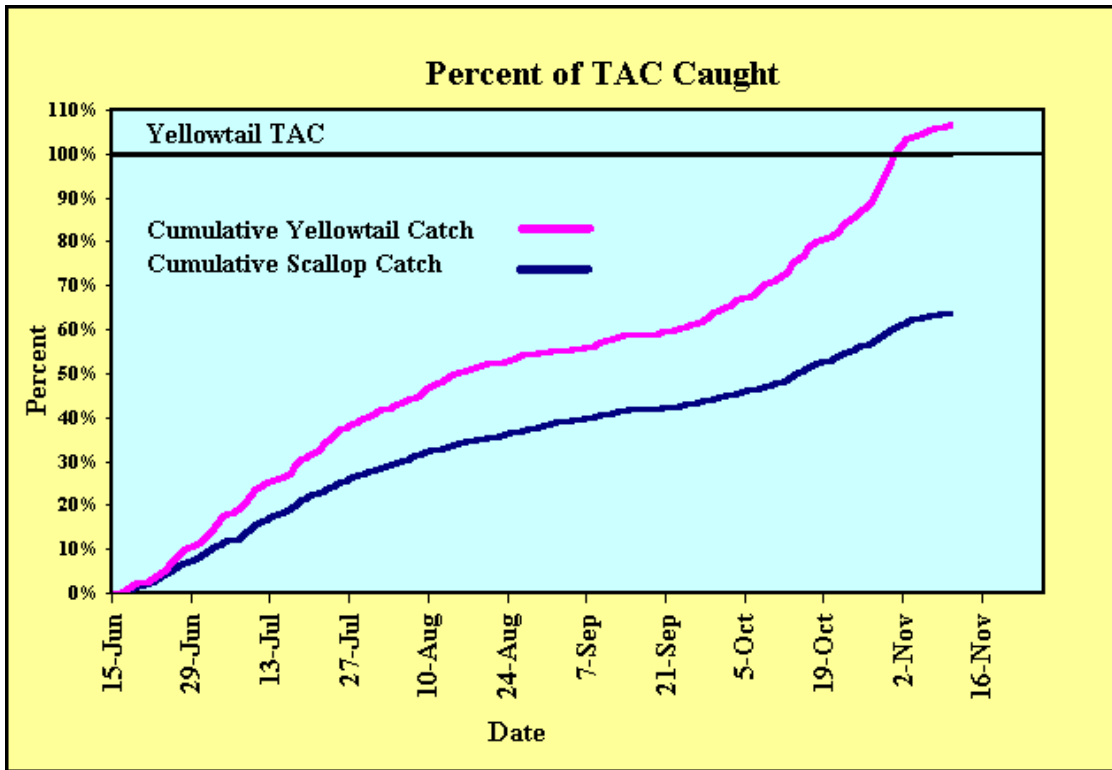


Figure 5. Trend in cumulative scallop and yellowtail flounder catches during the 1999 Closed Area II scallop fishery.

Final report for controlled access sea scallop trips in Closed Area II during June 15, 2000 to August 14, 2000  
 (Source: NMFS at <http://www.nero.noaa.gov/ro/fso/scal081400.htm>).

Table 2. Scallop landings and yellowtail flounder bycatch on controlled access trips in Closed Area II during the 2000 fishing year; and summary of participation

	<b>Directed Scallop Fishery (meat weight)</b>	<b>Yellowtail Flounder Bycatch (live weight) Closed Area II and I</b>
<b>Total Allowable Catch (TAC)</b>	<b>6,468,179 lbs</b>	<b>1,582,323 lbs</b>
	<b>(2,934 mt)*</b>	<b>(717.75 mt)*</b>
<b>Total Catch to date (Pounds)</b>	<b>1,681,605</b>	<b>523,951</b>
<b>% of TAC</b>	<b>26%</b>	<b>33%</b>
	<b>Trips</b>	<b>Number of Vessels</b>
<b>Number of Trips</b>	1	23
	2	32
	3	23
	4	2
	5	.
	6	.
<b>Total Number of Participating Vessels</b>		<b>80</b>
<b>Number of Scallop Fishing Trips</b>		<b>164</b>
<b>Percentage of Observed Trips</b>		<b>51.2%</b>

\* 2,204.56 lbs equal 1 metric ton (mt)

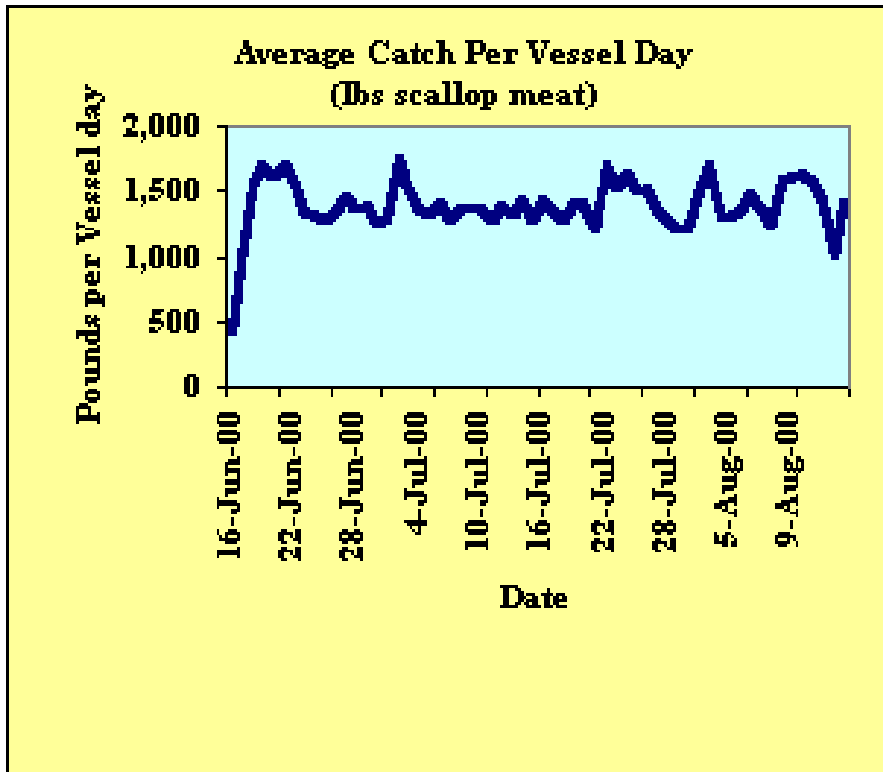


Figure 6. Trends in daily scallop catches during the 2000 Closed Area II scallop fishery.

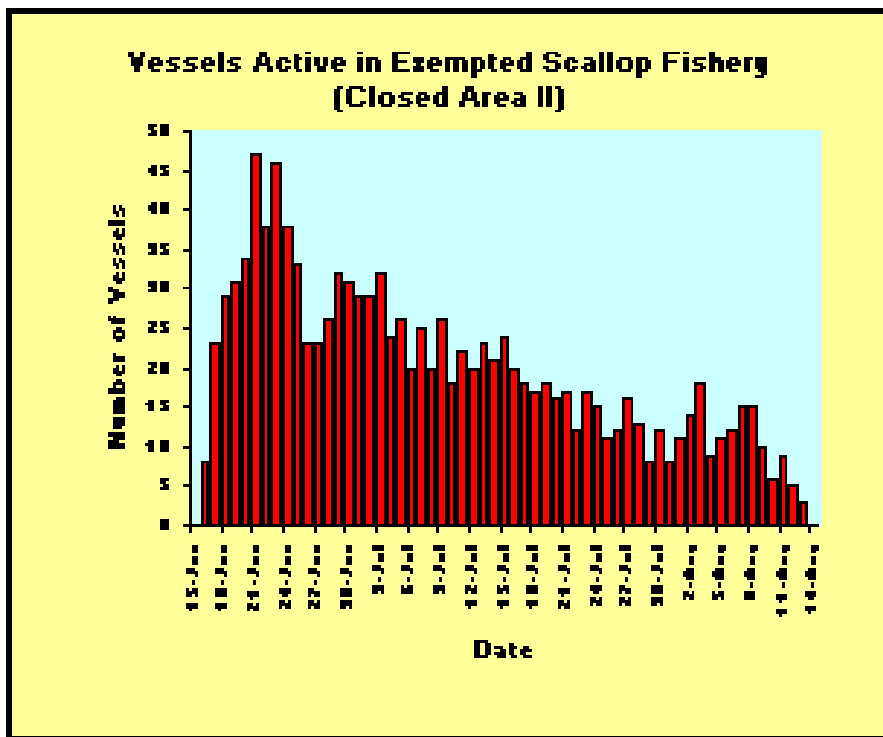


Figure 7. Trends in fishing activity during the 2000 Closed Area II scallop fishery.

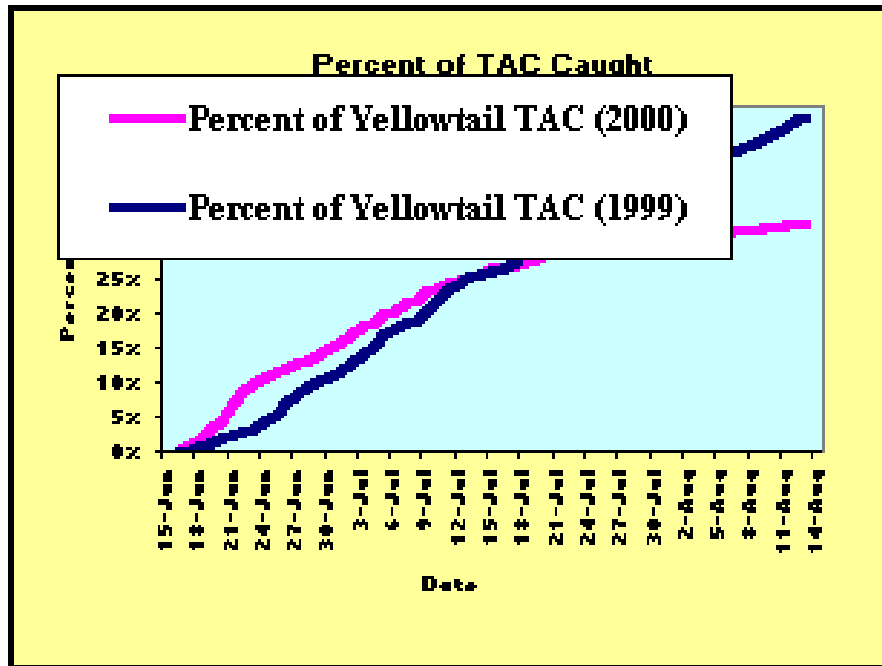


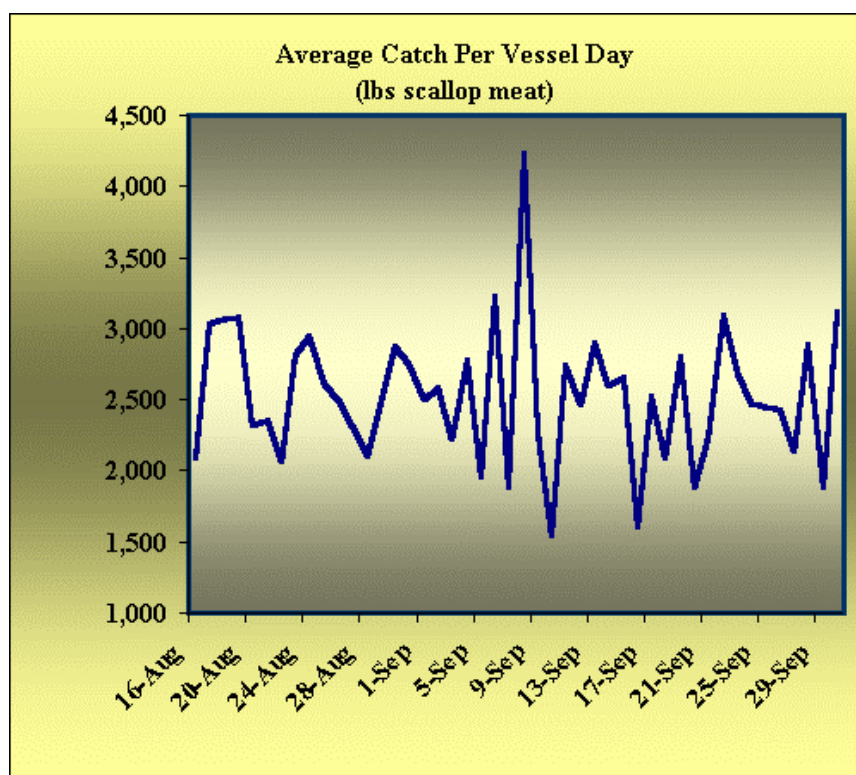
Figure 8. Trends in cumulative scallop and yellowtail flounder catches during the 2000 Closed Area II scallop fishery.

Final report for controlled access sea scallop trips in the Nantucket Lightship Area during August 15, 2000 to September 30, 2000 (Source: NMFS at <http://www.nero.noaa.gov/ro/fso/scal093000.htm>).

**Table 3. Scallop landings and yellowtail flounder bycatch on controlled access trips in the Nantucket Lightship Area during the 2000 fishing year; and summary of participation**

	<b>Directed Scallop Fishery (meat weight)</b>	<b>Yellowtail Flounder Bycatch (live weight) Nantucket Lightship</b>
<b>Total Allowable Catch (TAC)</b>	<b>5,390,149 lbs.</b>	<b>109,125 lbs</b>
	<b>(2,445 mt)*</b>	<b>(49.50 mt)*</b>
<b>Total Catch to date (Pounds)</b>	<b>1,286,864</b>	<b>16,463</b>
<b>% of TAC</b>	<b>24%</b>	<b>15%</b>
<b>Total Number of Participating Vessels</b>		<b>136</b>
<b>Percentage of Observed Trips</b>		<b>35.3%</b>

\* 2,204.56 lbs equal 1 metric ton (mt)



**Figure 9. Trends in average daily scallop catches during the 2000 Nantucket Lightship Area scallop fishery.**

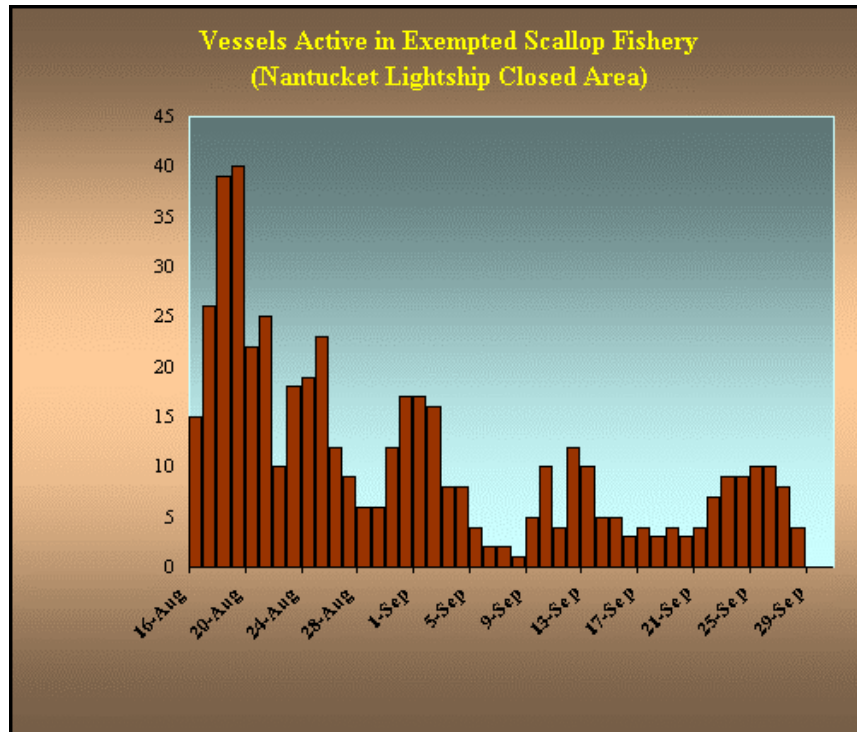


Figure 10. Trends in fishing activity during the 2000 Nantucket Lightship Area scallop fishery.

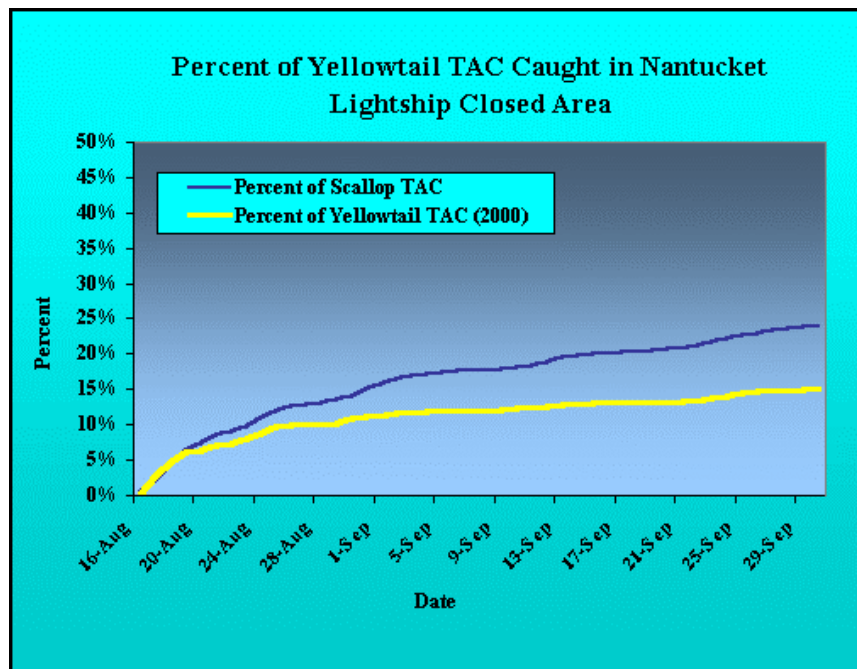


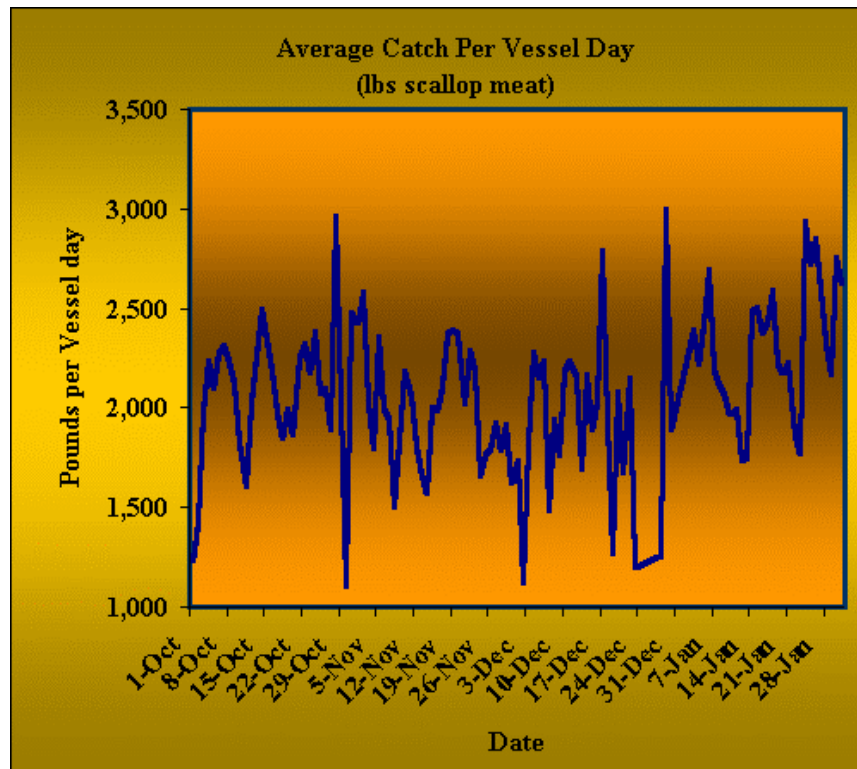
Figure 11. Trends in cumulative scallop and yellowtail flounder catches during the 2000 Nantucket Lightship Area scallop fishery.

Final report for controlled access sea scallop trips in Closed Area I during October 1, 2000 to January 31, 2001  
 (Source: NMFS at <http://www.nero.noaa.gov/ro/fso/scal020201.htm>).

**Table 4. Scallop landings and yellowtail flounder bycatch on controlled access trips in Closed Area I during the 2000 fishing year; and summary of participation**

	<b>Directed Scallop Fishery</b> (meat weight)	<b>Yellowtail Flounder Bycatch</b> (live weight)	
	<b>Closed Area 1</b>	<b>Closed Area I</b>	<b>Closed Area II</b>
<b>Total Allowable Catch (TAC)</b>	<b>6,858,386 lbs.</b> <b>(3,111 mt)*</b>	<b>1,582,323 lbs</b> <b>(717.75 mt)*</b>	
<b>Total Catch to date (lbs)</b>	<b>3,322,000</b>	<b>110,140</b>	<b>523,951</b>
<b>% of TAC</b>	<b>48%</b>	<b>40%</b>	
<b>Total Number of Participating Vessels (CA1)</b>		135	
<b>Percentage of Observed Trips (CA1)</b>		28.9%	

\* 2,204.56 lbs equal 1 metric ton (mt)



**Figure 12. Trends in average daily scallop catches during the 2000 Closed Area I scallop fishery**

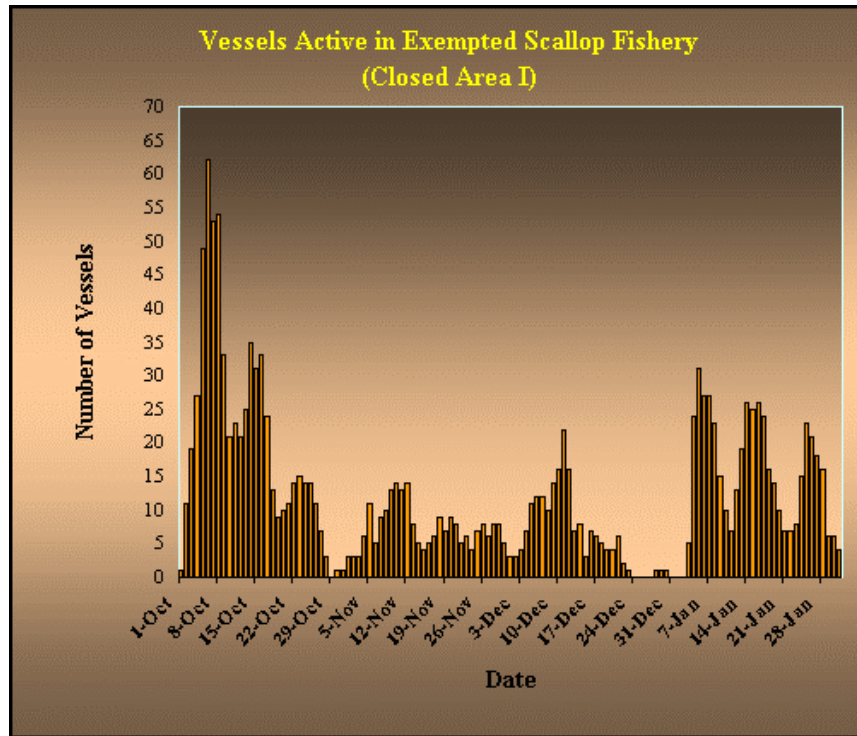


Figure 13. Trends in fishing activity during the 2000 Closed Area I scallop fishery

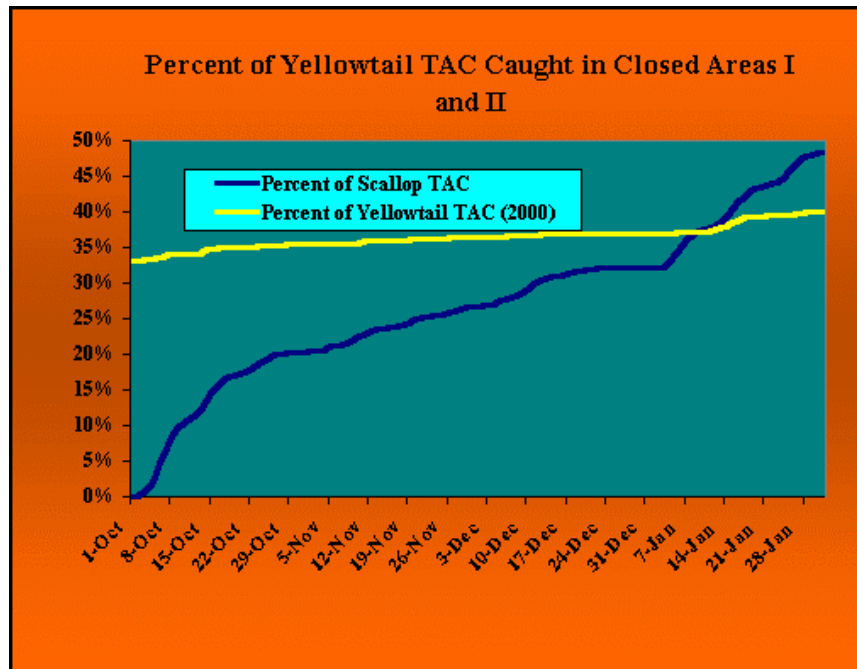


Figure 14. Trends in cumulative scallop and yellowtail flounder catches during the 2000 Closed Area I scallop fishery.