

A sunset scene over a body of water with several islands in the distance. The sun is a bright white circle in the center, surrounded by a red and orange glow. The water is dark, and the islands are silhouetted against the horizon.

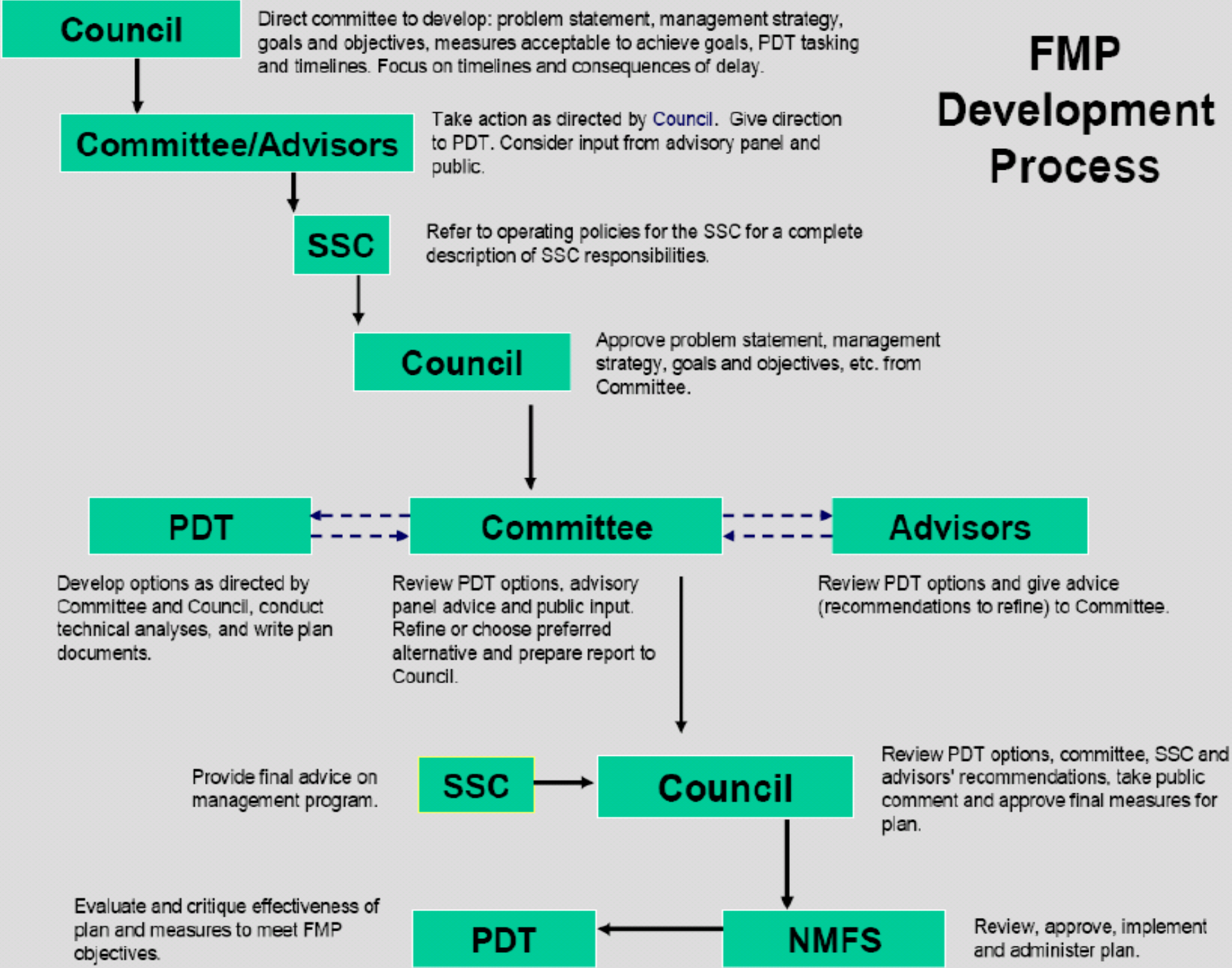
Workshop on Ecosystem- Based Fisheries Management

NEFMC Scientific & Statistical Committee

August 25 & 26, 2009

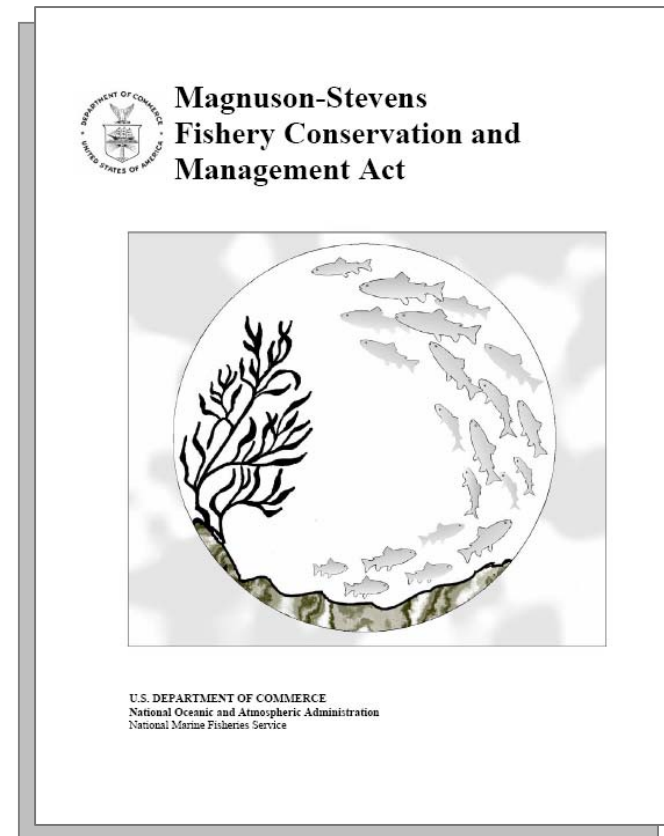
Newport, Rhode Island

FMP Development Process



SSC Priorities

- In the development of annual and monthly agendas:
 - Prioritize Acceptable Biological Catch (ABC) recommendations
 - Prioritize other requests according to:
 - the source of the request (in descending order: from the Council, Executive Committee, Plan Committees, PDTs, other,
 - with the nature of request (consensus, majority, member) explicit in the request.
 - In addition to Council requests, consider larger aspects of the 'spirit of the act' (e.g., ecosystem-based fishery management, socio-economic benefits)



EBFM in MSRA

Finding #11:

A number of the Fishery Management Councils have demonstrated significant progress in ***integrating ecosystem considerations*** in fisheries management using the existing authorities provided under this Act.

Definition of Optimum Yield:

...will provide the greatest overall benefit to the Nation, particularly with respect to food production and recreational opportunities, and taking into account the ***protection of marine ecosystems***.

Establishment of Ecosystem Panel:

Not later than 180 days after the date of enactment of the Sustainable Fisheries Act, the Secretary shall establish an advisory panel under this Act to develop recommendations to ***expand the application of ecosystem principles*** in fishery conservation and management activities.

Terms of Reference

1. *Consideration of EBFM implementation framework.*
2. *Implementation examples of EBFM.*
3. *Steps towards drafting of EBFM Plan.*

Deliverable:

SSC Report on EBFM
Deliberations.

→ **Need additional insights
and expertise to
produce this.**



Agenda: Day 1

- 09:00 – 09:30 Introduction and workshop background
- 09:30 – 10:30 Progress towards EBFM in New England (Chad Demarest)
- 10:30 – 10:45 Break
- 10:45 – 12:15 EBFM Examples
 - 10:45 – 11:30 California fisheries (Les Kaufman)
 - 11:30 – 12:15 Eastern Scotian Shelf integrated management (Tana Worcester)
- 12:15 – 1:15 Lunch
- 1:15 – 3:30 Implementation Examples - cont'd
 - 1:15 – 2:00 Canadian Georges Bank fishery (Stratis Gavaris)
 - 2:00 – 2:45 Australia (Steve Cadrin)
 - 2:45 – 3:30 Chesapeake Bay (Ed Houde)
- 3:30 – 3:45 Break
- 3:45 – 4:30 Discussion on best practices and lessons learned; issues for workshop day two
- 4:30 Adjourn

Agenda: Day 2

- 09:00 – 10:00 Synopsis of previous day's discussion
- 10:00 – 10:15 Break
- 10:15 – 10:45 Science in support of EBFM (Mike Fogarty)
- 10:45 – 12:00 Discussion on drafting EBFM Plan
- 12:00 – 1:00 Lunch
- 1:00 – 3:00 Discussion on drafting an EBFM Plan - cont'd
- 3:00 Adjourn



Topics to Address on Day 2

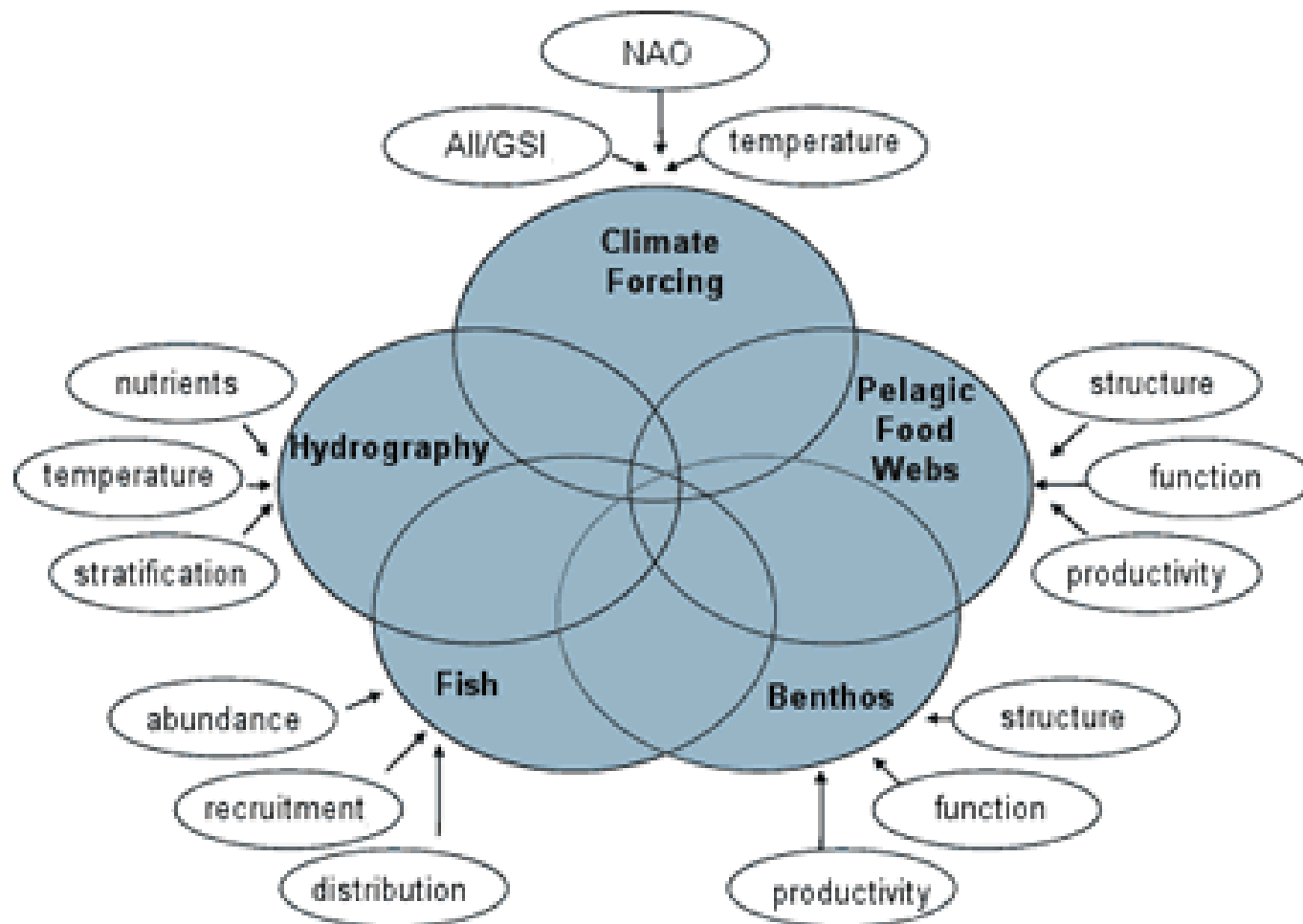
Institutional arrangements for NEFMC EBFM Plan

- One overarching plan or integration into existing species – specific plans?
- Process of plan development, review and approval (e.g. who to involve in plan drafting, how it is reviewed and how it is communicated to the NEFMC and more generally)
- Longer-term institutional requirements of EBFM plan

Elements of NEFMC EBFM Plan

- Identification of Issues (e.g. high level objectives, issues associated with objectives, ecosystem components associated with each issue)
- Ecosystem description (e.g. what is known about the Gulf of Maine ecosystem, what new knowledge is needed)
- Prioritization of issues (e.g. use of tools such PSA)
- Development of operational objectives (e.g. indicators and reference points, monitoring requirements)
- Development of management actions (e.g. areal management)

What About EBM?



EBFM

vs.

EBM

The Council (via NMFS) has the **authority to regulate**:

- Who catches fish.
- How many, what kind, and how big.
- Where.
- How.
- When.

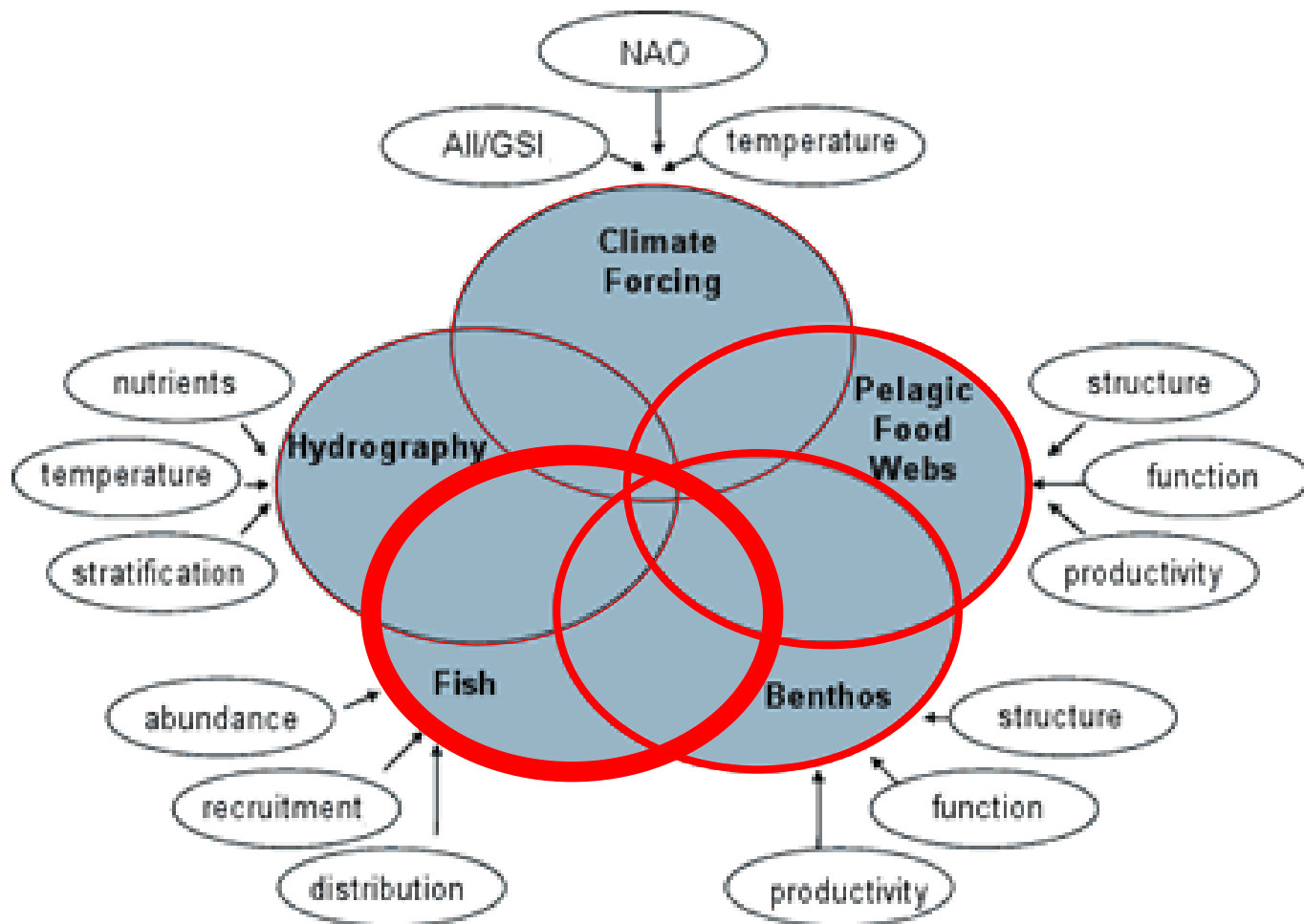


The Council **has commented** on non-fishing impacts such as:

- Offshore wind farms.
- Marine sanctuary management.
- Digging of borrow pits.
- Tire reefs.



What About EBM?



EBFM

Primary focus of this workshop.

vs.

EBM

Useful to collect and include ideas on science, collaboration, etc.



Steering Committee

- **SSC members:**
 - Bob O'Boyle, Chair
 - Steve Cadrin
 - Mike Sissenwine
 - Jake Kritzer
 - Les Kaufman
 - Andy Rosenberg
 - J.J. MacGuire
 - Rob Robertson
- **Council staff:**
 - Chris Kellogg
 - Pat Fiorelli
- **Council members:**
 - John Pappalardo

